

**DOE-Zahlen / Chiffres DOE**

18.03.2020

Amerikanische Bestandszahlen in Mio Barrels / (stocks américains en mio de barils)

	Situation 13/03/2020	± Vorwoche ± sem. passée		15/03/19	ø 5 Jahre ans	Erwartung Estimations
	DOE	DOE	API	DOE		
<b>Distillates</b>	<b>122.120</b>	<b>-2.940</b>	<b>-3.6</b>	132.242	140.6	-5.1/+1.0 ø -2.3
<b>Gasolines/Essence</b>	<b>240.819</b>	<b>-6.180</b>	<b>-7.8</b>	241.503	243.7	-5.0/+0.9 ø -2.4
<b>Crude</b>	<b>453.737</b>	<b>+1.954</b>	<b>-0.4</b>	439.483	469.4	+0.7/+4.6 ø +3.1
	<b>816.676</b>	<b>-7.166</b>	<b>-11.0</b>	<b>813.228</b>	<b>853.7</b>	
<b>Crude prod, mbpd</b>	<b>13.100</b>	<b>+0.100</b>		12.100		
<b>Cushing.</b>	<b>38.445</b>	<b>+0.563</b>	<b>+0.1</b>	46.383		
<b>Raff.Kap. / Cap. raff.</b>	<b>86.4%</b>	<b>±0%</b>		88.9%		-0.9/+0.9% +1.0%
<b>Input Raff. *</b>	<b>15.820</b>	<b>+0.118</b>		16.198		
<b>Production Distillates*</b>	<b>4.686</b>	<b>-0.019</b>		4.923		
<b>Production Gasolines*</b>	<b>9.974</b>	<b>+0.018</b>		9.925		
<b>Crude imports*</b>	<b>6.539</b>	<b>+0.129</b>		6.932		
<b>Crude exports*</b>	<b>4.378</b>	<b>+0.968</b>		3.392		
<b>Products imports*</b>	<b>2.428</b>	<b>+0.328</b>		2.116		
<b>Products exports*</b>	<b>5.469</b>	<b>+0.171</b>		4.197		
<b>Net imports Total</b>	-880	-339		1.459		
<b>Crude</b>	2.161	3.002		3.540		
<b>Products</b>	-3.041	-3.341		-2.081		
<b>SPR</b>	<b>634.967</b>	<b>0</b>		649.126		
<b>Nachfrage/demande</b>						ø 4 weeks
<b>Distillates</b>	<b>4.013</b>	<b>-0.385</b>		4.220		
<b>Nachfrage / demande</b>						ø 4 weeks
<b>Gasolines *</b>	<b>9.696</b>	<b>+0.247</b>		9.148		
<b>Nachfrage / demande</b>						ø 4 weeks
<b>All products **=mbpd</b>	<b>21.477</b>	<b>-0.383</b>		21.065		

Symbol	Description	LTS	High	Low	NLTT	TMLTT	PCNLQ	TCV	YCV	^
IUSDCHF	Switzerland (Franc) Index	9679p	9691	9566	+67	15:49	0.70			
IEURUSD	Euro / United States Index	10889p	11046	10879	-110	15:49	-1.00			
IEURCHF	Euro / Switzerland Index	10541p	10587	10537	-29	15:49	-0.27			
QPJ20	LS Gas Oil, Apr 20	28275p	30200	28250	-1725	15:49	-5.75	46571	103365	
QPK20	LS Gas Oil, May 20	28675	30650	28650	-1800	15:49	-5.82	49436	71734	
QPM20	LS Gas Oil, Jun 20	29325	31325	29325	-1850	15:49	-5.93	39698	57321	
QPN20	LS Gas Oil, Jul 20	30275	32225	30250	-1850	15:48	-5.91	13817	20646	
QOK20	ICE Brent Crude, May 20	2655	2921	2649	-218	15:49	-7.55	171362	305276	
QOM20	ICE Brent Crude, Jun 20	2835	3090	2831	-206	15:49	-6.77	194030	261566	
HOEJ20	NY Harbor ULSD, Apr 20	9772	10557	9767	-585	15:49	-5.64	27090	53835	
HOEK20	NY Harbor ULSD, May 20	9843	10585	9836	-555	15:49	-5.31	27279	44826	
RBEJ20	RBOB Gasoline (Globex), Apr 20	6819	7416	6709	-295	15:49	-4.20	13316	51380	
RBEK20	RBOB Gasoline (Globex), May 20	6924	7503	6807	-266	15:49	-3.77	27536	60659	
CLEJ20	Crude Light (Globex), Apr 20	2355	2722	2348	-340	15:49	-12.65	163229	545820	
CLEK20	Crude Light (Globex), May 20	2409	2760	2404	-324	15:49	-11.86	407658	520078	
NGEJ20	Natural Gas (Globex), Apr 20	1639	1728	1616	-90	15:49	-5.21	62603	163792	
DJI	DJ Industrial Average	20197.1	20489.3	19871.4	-1040.2	15:49	-4.97	0	0	
DJUSOG	DJ US Oil & Gas Producers Index	235.25y	256.21	234.87	-20.96	15:49	-8.18			v

### Charts 60'

#### Gasoil APR

5 < 21

#### Combi CHF

5 < 21

#### Combi €

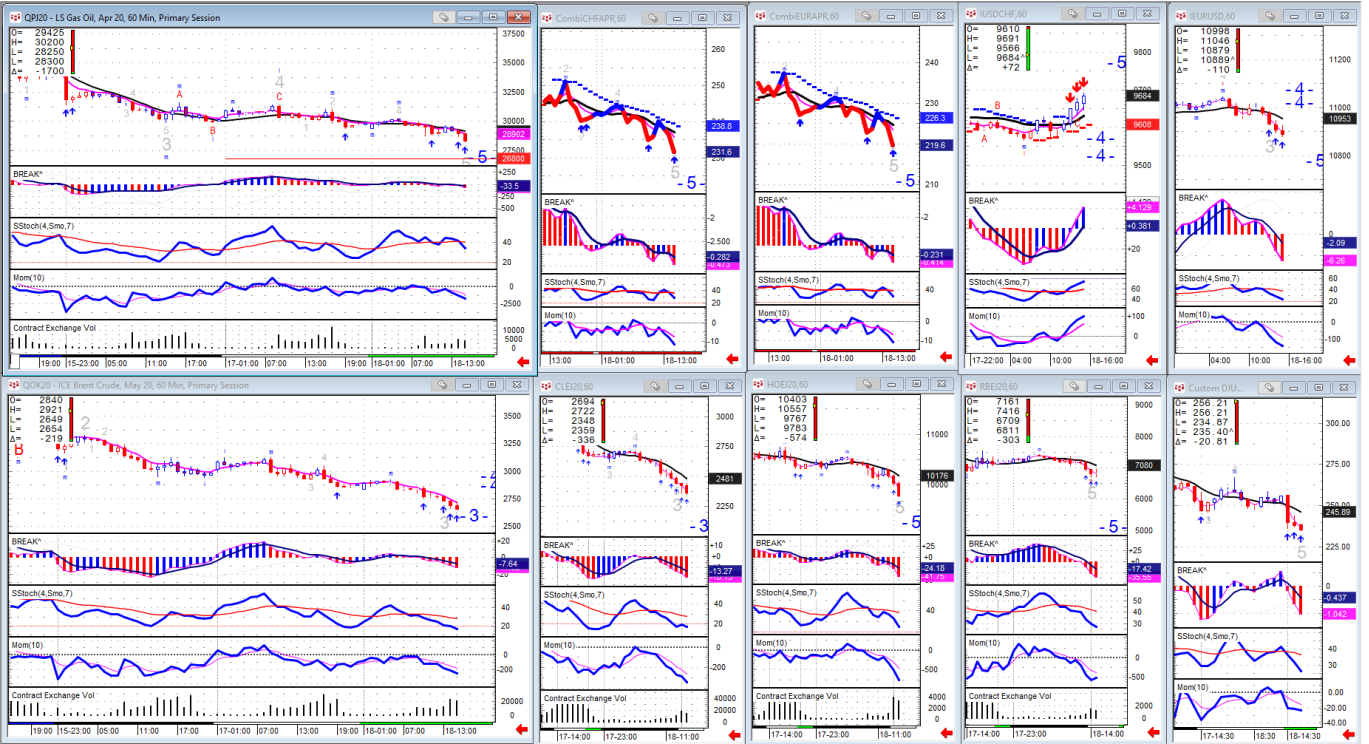
5 < 21

#### \$/CHF

5 > 21

#### Euro/\$

5 < 21



#### Brent MAY

5 < 21

#### Crude APR

5 < 21

#### Diesel APR

5 < 21

#### Gasoline APR

5 < 21

#### DJ = O&G 30'

5 < 21

### Gasoil 240'



### Gasoil 60'

