

Symbol	Description	LTS	High	Low	NLTT	TMLTT	PCNLQ	TCV	YCV
IUSDCHF	Switzerland (Franc) Index	9856y	9902	9743	-4	21:59	-0.04		
IEURUSD	Euro / United States Index	10697y	10831	10637	+6	21:59	0.06		
IEURCHF	Euro / Switzerland Index	10549y	10560	10523	+9	21:59	0.09		
QPPJ20	LS Gas Oil ETS Settlement, Apr 20	30100u	32375	29625	+1325	17:29	4.60	86800	84063
QPJ20	LS Gas Oil, Apr 20	30075	32375	29275	+1300	22:38	4.34	94561	94561
QPPK20	LS Gas Oil ETS Settlement, May 20	30375u	32725	29900	+1200	17:29	4.11	91531	90327
QPK20	LS Gas Oil, May 20	30350	32725	29600	+1175	22:38	3.94	101983	101983
QPM20	LS Gas Oil, Jun 20	30975	33325	30275	+1075	22:38	3.43	53743	53743
QPN20	LS Gas Oil, Jul 20	31700	34075	31025	+875	22:38	2.84	15204	15204
QPQ20	LS Gas Oil, Aug 20	32425	34850	31775	+750	22:38	2.45	10770	10770
QOK20	ICE Brent Crude, May 20	2721	3094	2681	-126	22:58	-4.25	345348	365388
QOM20	ICE Brent Crude, Jun 20	2935	3287	2882	-95	22:58	-3.14	371221	359370
QOJ21	ICE Brent Crude, Apr 21	3681u	3681	3681	-134	19:39	-3.51	6554	1764
HOEJ20	NY Harbor ULSD, Apr 20	10078	11120	10010	-339	21:57	3.68	22168	40996
HOEK20	NY Harbor ULSD, May 20	10212	11184	10090	-263	21:59	15.51	68270	77319
RBEJ20	RBOB Gasoline (Globex), Apr 20	6254	7484	6010	-596	21:59	-13.56	21676	31731
RBEK20	RBOB Gasoline (Globex), May 20	6380	7612	6233	-552	21:59	-4.79	59737	56159
CLEJ20	Crude Light (Globex), Apr 20	1984	2789	1946	-538	19:29	-21.33	18012	136722
CLEK20	Crude Light (Globex), May 20	2364	2849	2239	-227	21:59	-8.30	1092222	1191520
CLEH21	Crude Light (Globex), Mar 21	3281	3573	3151	-51	21:06	78.84	6057	9876
NGEJ20	Natural Gas (Globex), Apr 20	1577	1700	1574	-77	21:59	-3.75	139912	189477
DJI	DJ Industrial Average	19173.9	20531.2	19094.2	-913.2	21:20	-3.70	0	0
DJUSOG	DJ US Oil & Gas Producers Index	235.63b	244.54	226.41	+0.89	21:19	0.38		

WOCHENCHARTS / CHARTS HEBDOMADAIRES – MA = Moving average

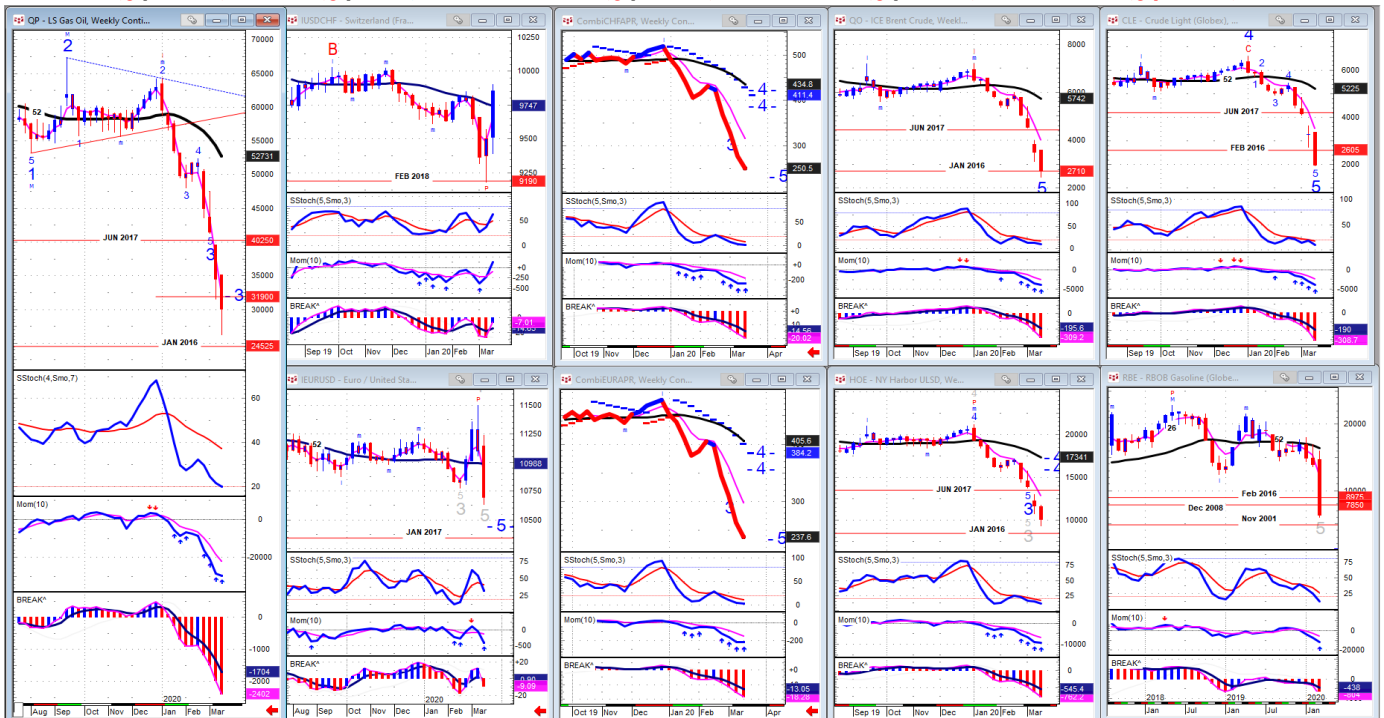
Gasoil 5 < 52
BREAK <0 / MA < MA

\$/CHF 5 < 52
<0 / MA > MA

Combi CHF 5 < 52
<0 / MA < MA

Brent 5 < 52
<0 / MA < MA

Crude 5 < 52
<0 / MA < MA



Euro/\$ 5 < 52
<0 / MA < MA

Combi € 5 > 52
<0 / MA < MA

Heating Oil 5 < 52
<0 / MA < MA

Gasoline 5 < 52
<0 / MA < MA

Veränderungen Positionen Money Managers / Fonds per 17/03/2020 (CFTC) – in mio Fass

Positions tenues par les Money Managers/Fonds 17/03/2020 (CFTC) – en millions barils

New York

Crude = Hausse 158.167 +7.8% / Hausse -25.620 / -9.9%, **Baisse -37.003 / -33.0%**
 49/41 – 46/56 Hausse/Baisse = 75.7% - Vorperiode, semaine précédente = 69.8%

Diesel/Heating Oil = Baisse 2.429 -87.2% / Baisse +0.322 / +1.6% / Hausse -16.253 / -42.1%
 30/23 – 36/21 Baisse/Hausse = 52.9% - Vorperiode, semaine précédente 66.3%

Gasoline = Hausse 56.303 -19.0% / Hausse -10.974 / -12.9%, **Baisse +2.225 / +14.2%**
 55/27 – 56/30 Hausse/Baisse = 80.6% - Vorperiode, semaine précédente = 84.5%

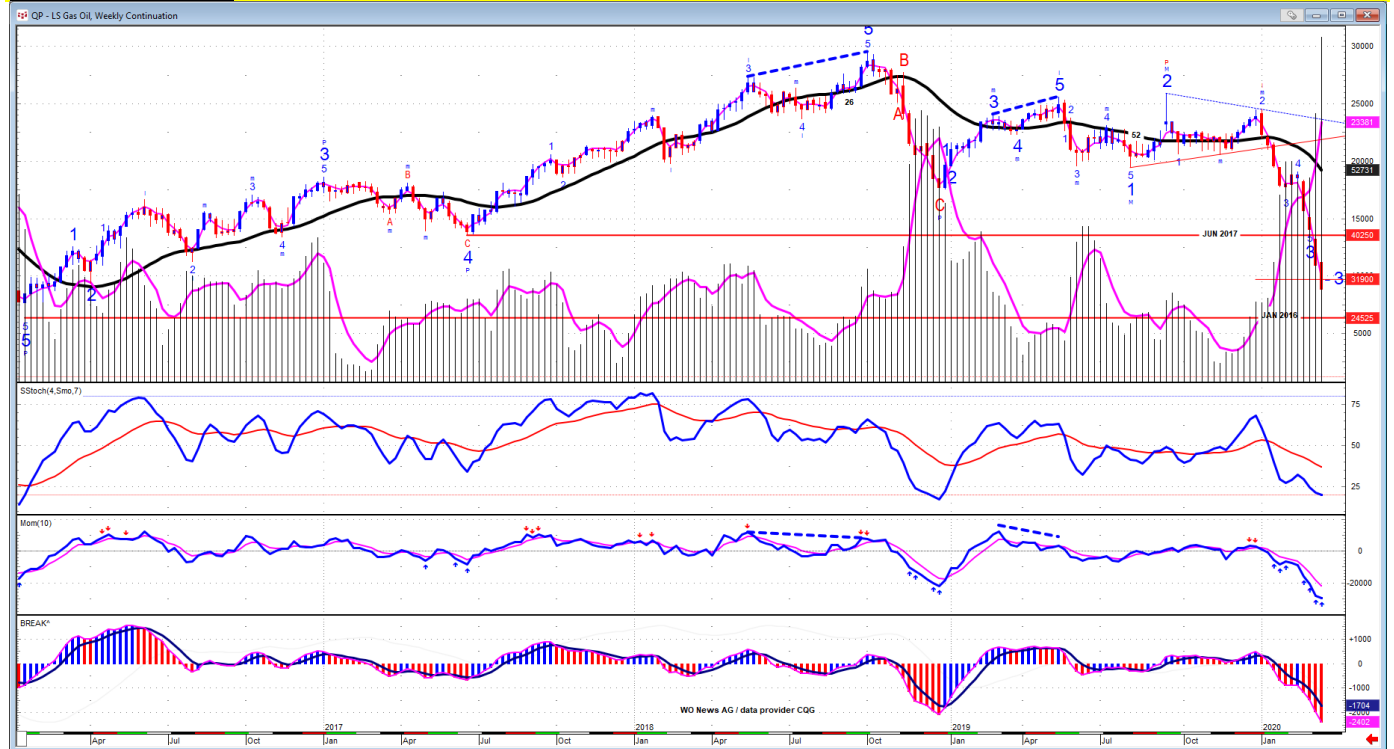
Natural Gas = Baisse 129.591 -46.2% / Baisse -10.500 / -7.2%, Hausse -121.880 / -31.6%
 72/44 – 83/53 Baisse/Hausse 66.2% - Vorperiode, semaine précédente = 72.7%

ICE London

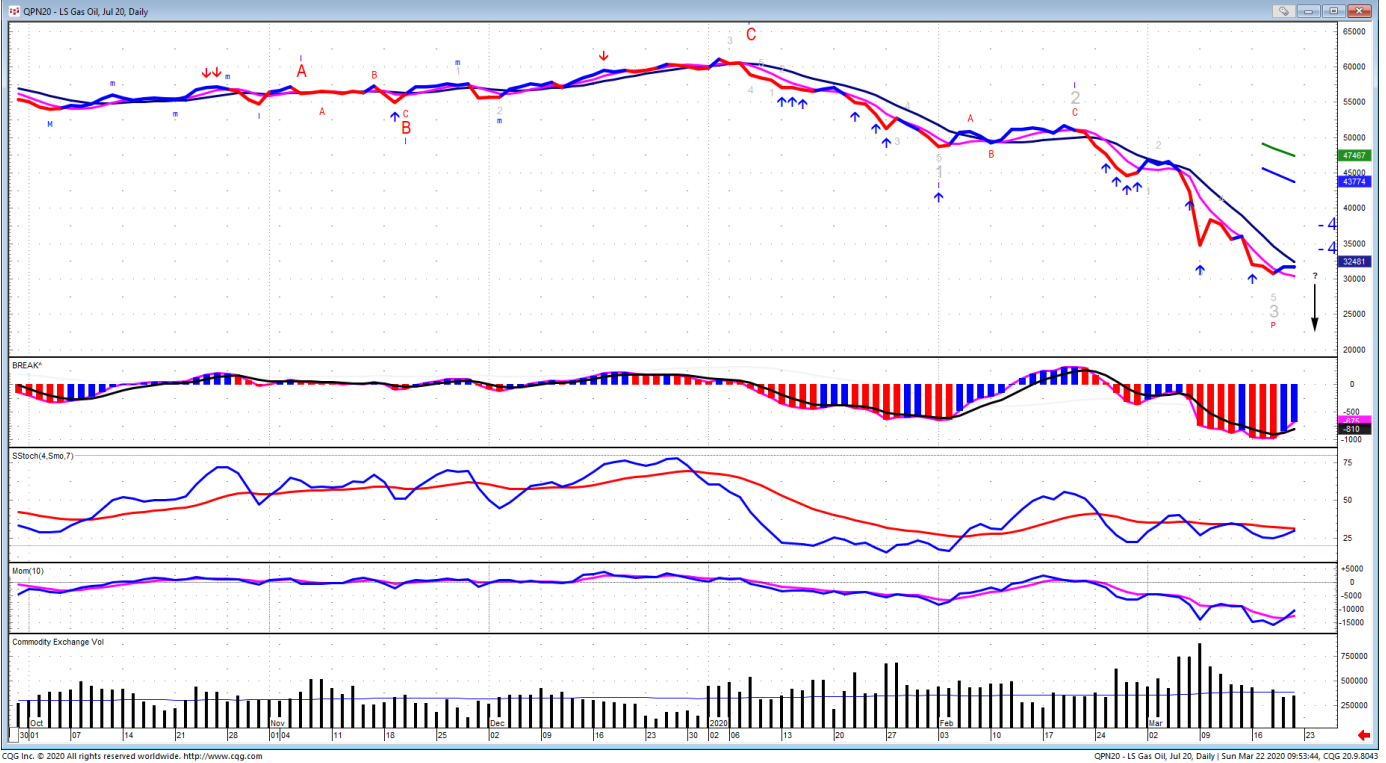
Brent = Hausse 70.461 -51.3% / Hausse -45.842 / -15.7%, **Baisse +28.445 / +19.3%**
 48/71 – 61/63 Hausse/Baisse = 58.3% - Vorperiode, semaine précédente = 66.5%

Gasoil = Hausse 16.025 +277% / Hausse -5.280 / -8.1%, **Baisse -15.523 / -26.2%**
 22/37 – 25/40 Hausse/Baisse = 57.8% - Vorperiode, semaine précédente = 52.3%

GASOIL WEEKLY



GASOIL DAILY – Tagesschlusskurse / Cours de clôture - 5 < 21 / BREAK < 0 / MA > MA



\$/ CHF Daily – 5 > 21 / BREAK > 0 / MA > MA



€/ \$ Daily – 5 < 21 / BREAK < 0 / MA < MA

