

| | Situation 13/11/2020 | ± Vorwoche ± sem. passée | API | 15/11/19 | ø 5 Jahre ans | Erwartung Estimations |
|--------------------------------|-------------------------|-----------------------------|-------------|----------------|------------------|--------------------------|
| | DOE | DOE | DOE | DOE | | |
| Distillates | 144.073 | -5.216 | -5.0 | 115.681 | 135.8 | -4.3 /+1.0 ø -1.7 |
| Gasolines/Essence | 227.967 | +2.611 | +0.3 | 220.846 | 222.1 | -2.7 /+2.0 ø -0.3 |
| Crude | 489.475 | +0.769 | +4.2 | 450.380 | 457.9 | -3.5 /+3.2 ø +1.2 |
| | 861.515 | -1.836 | -0.5 | 786.907 | 815.8 | |
| Crude prod, mbpd | 10.900 | +0.400 | | 12.800 | | |
| Fracking Lower 48 | 10.400 | +0.400 | | 12.300 | | |
| Cushing | 61.613 | +1.2 | +1.6 | 44.221 | | |
| Raff.Kap. / Cap. raff. | 77.4% | +2.9% | | 89.5% | | -0.6%/+1.2% ø+0.5% |
| Input Raff. * | 13.841 | +0.394 | | 16.435 | | |
| Production Distillates* | 4.275 | +0.038 | | 5.124 | | |
| Production Gasolines* | 9.064 | -0.255 | | 10.053 | | |
| Crude imports* | 5.254 | -0.245 | | 5.972 | | |
| Crude exports* | 2.748 | -0.017 | | 3.027 | | |
| Products imports* | 1.824 | -0.063 | | 2.129 | | |
| Products exports* | 5.070 | -0.269 | | 5.384 | | |
| Net imports Total | -740 | -180 | | -310 | | |
| Crude | 2.506 | 2.734 | | 2.945 | | |
| Products | -3.246 | -2.914 | | -3.255 | | |
| SPR | 638.301 | -0.405 | | 637.537 | | |
| Nachfrage/demande | | | | | ø 4 weeks | |
| Distillates | 4.225 | +0.171 | | 4.354 | | |
| Nachfrage / demande | | | | | ø 4 weeks | |
| Gasolines * | 8.258 | -0.504 | | 9.360 | | |
| Nachfrage / demande | | | | | ø 4 weeks | |
| All products * *=mbd | 19.564 | -0.616 | | 21.365 | | |

| Symbol | Description | LTS | High | Low | NLTT | TMLTT | PCNLQ | TCV | YCV | ^ |
|---------|---------------------------------|---------|---------|---------|-------|-------|-------|--------|--------|---|
| IUSDCHF | Switzerland (Franc) Index | 9105y | 9123 | 9096 | -10 | 16:47 | -0.11 | | | |
| IEURUSD | Euro / United States Index | 11871y | 11892 | 11850 | +11 | 16:47 | 0.09 | | | |
| IEURCHF | Euro / Switzerland Index | 10807y | 10826 | 10802 | -5 | 16:47 | -0.05 | | | |
| QPZ20 | LS Gas Oil, Dec 20 | 35875 | 36450 | 35225 | +850 | 16:47 | 2.43 | 63486 | 76577 | |
| QPF21 | LS Gas Oil, Jan 21 | 36250 | 36825 | 35625 | +800 | 16:47 | 2.26 | 42000 | 47978 | |
| QPG21 | LS Gas Oil, Feb 21 | 36650 | 37225 | 36050 | +725 | 16:47 | 2.09 | 12453 | 21308 | |
| QPH21 | LS Gas Oil, Mar 21 | 37000 | 37525 | 36475 | +725 | 16:46 | 2.00 | 8321 | 15224 | |
| QOF21 | ICE Brent Crude, Jan 21 | 4418 | 4489 | 4348 | +43 | 16:47 | 0.98 | 156034 | 250282 | |
| QOG21 | ICE Brent Crude, Feb 21 | 4435 | 4506 | 4369 | +39 | 16:47 | 0.91 | 89047 | 155064 | |
| HOEZ20 | NY Harbor ULSD, Dec 20 | 12585 | 12721 | 12347 | +194 | 16:47 | 1.57 | 16830 | 48781 | |
| HOEF21 | NY Harbor ULSD, Jan 21 | 12673 | 12818 | 12444 | +184 | 16:47 | 1.47 | 25773 | 49742 | |
| RBEZ20 | RBOB Gasoline (Globex), Dec 20 | 11595 | 11785 | 11482 | +63 | 16:47 | 0.57 | 11596 | 42175 | |
| RBEF21 | RBOB Gasoline (Globex), Jan 21 | 11597 | 11787 | 11470 | +69 | 16:47 | 0.57 | 19891 | 48655 | |
| CLEZ20 | Crude Light (Globex), Dec 20 | 4162 | 4246 | 4108 | +19 | 16:47 | 0.46 | 53493 | 243677 | |
| CLEF21 | Crude Light (Globex), Jan 21 | 4185y | 4268 | 4130 | +20 | 16:47 | 0.48 | 188951 | 236667 | |
| NGEZ20 | Natural Gas (Globex), Dec 20 | 2726 | 2783 | 2687 | +34 | 16:47 | 1.26 | 52524 | 110709 | |
| DJI | DJ Industrial Average | 29873.7 | 29930.8 | 29801.3 | +90.4 | 16:47 | 0.29 | 0 | 0 | |
| DJUSOG | DJ US Oil & Gas Producers Index | 329.71y | 333.84 | 329.13 | -1.06 | 16:47 | -0.32 | | | |

Gasoil

Charts 09:00 – 20:30

60'

TI – MA < MA

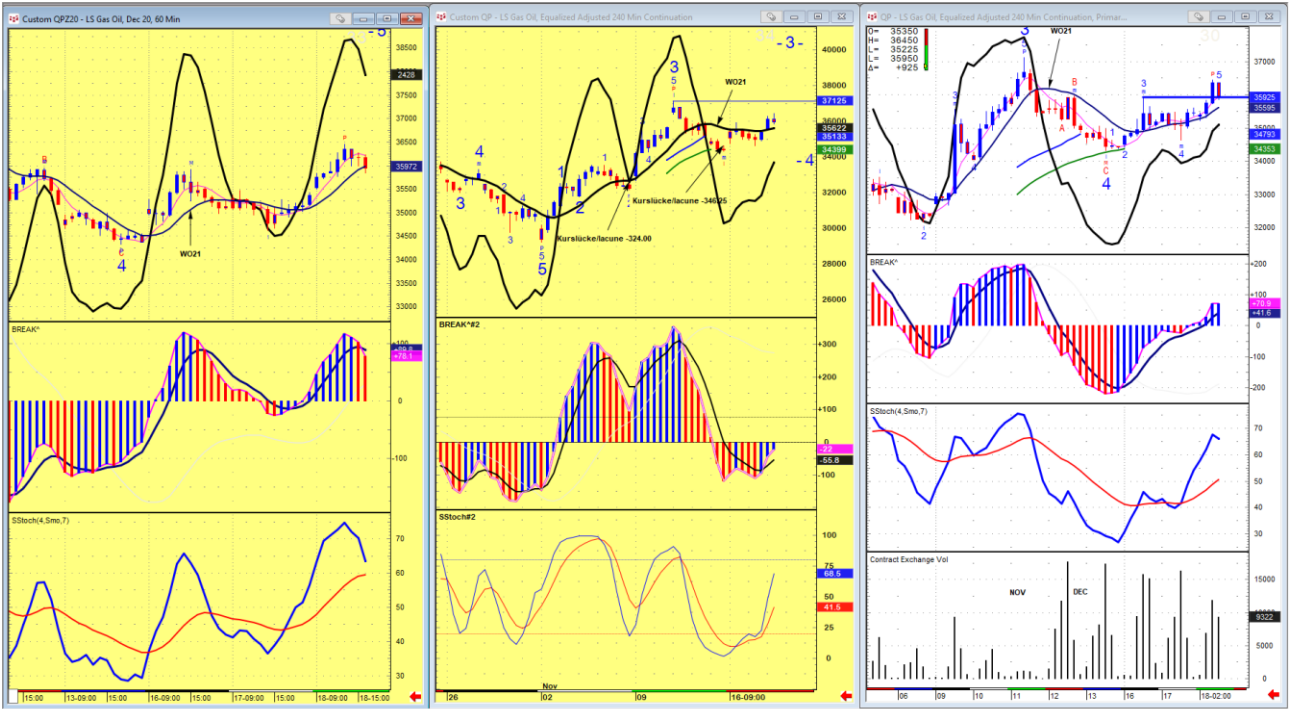
continuation

TI – MA > MA

240' 02:00 -23:30

continuation

TI – MA > MA



TendenzIndikator TI / Indicateur de tendance TI

| | Weekly | Daily | 240' 09 :00-20 :30 | 240' 02:00-23:30 | 60' 02:00-23:30 |
|---------------|--------|-------|--------------------|------------------|-----------------|
| Gasoil | Blue | Red | Blue | Blue | Red |
| Brent | Blue | Red | Blue | Blue | Red |
| Crude | Blue | Red | Blue | Blue | Red |
| Diesel | Blue | Red | Blue | Blue | Red |
| Gasoline | Blue | Red | Blue | Blue | Red |
| \$/CHF | Blue | Red | Blue | Blue | Red |
| €/€ | Blue | Red | Blue | Blue | Red |
| DJ O&G Prod. | Blue | Red | Blue | Blue | Red |
| DJ Industrial | Blue | Red | Blue | Blue | Red |

TI = Baisse Tendenzindikator/indicateur de tendance - TI = Hausse Tendenzindikator/indicateur de tendance